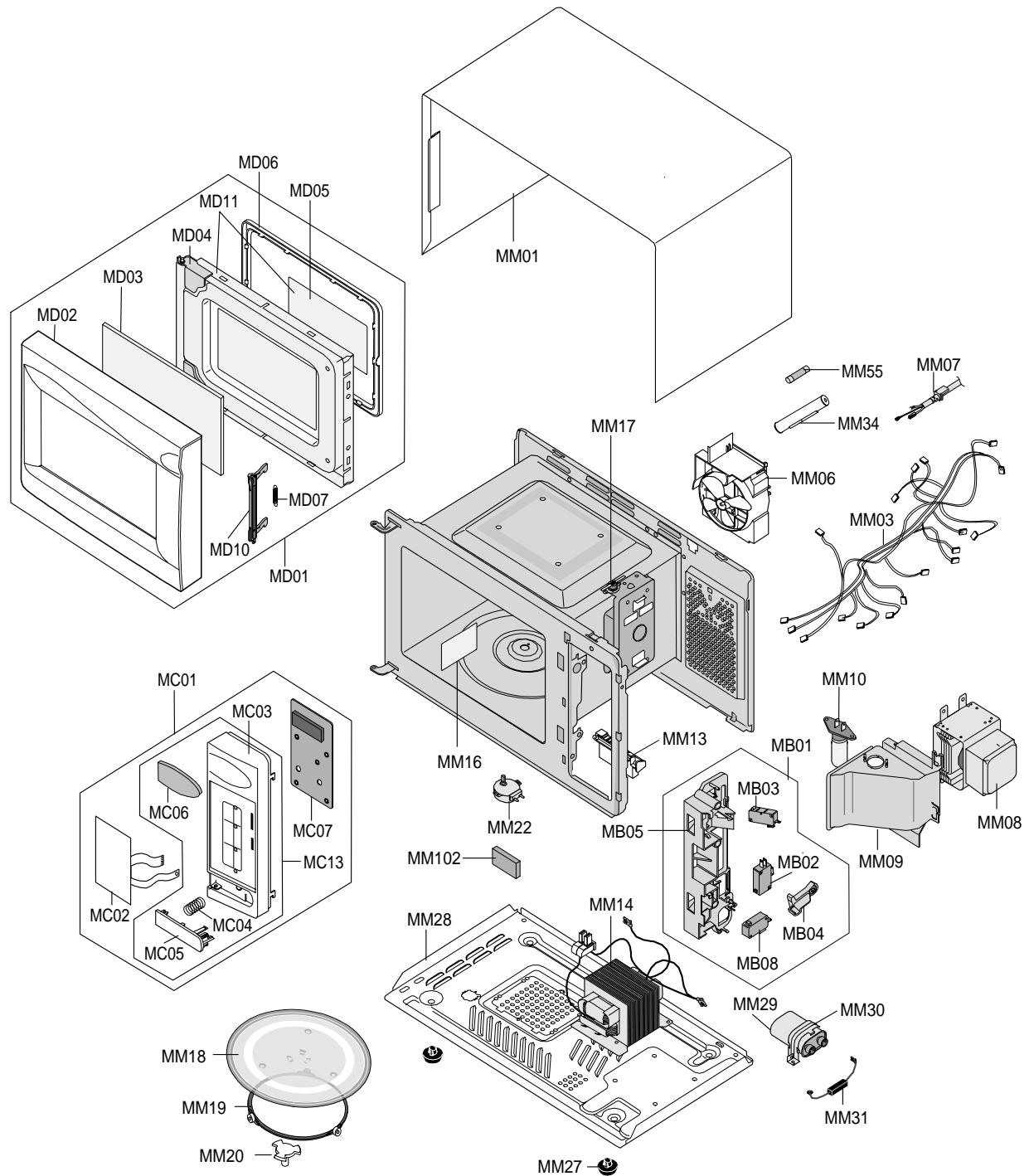


## 7. Exploded Views and Parts List

### 7-1 Exploded Views



## 7-2 Main Parts List

No.	Code No.	Description	Specification	Q'ty	Remark
MB01	DE96-00115D	ASSY BODY LATCH	MW1255WA,NC2000(BUTTON)	1	
MB02	3405-001033	SWITCH-MICRO	125/250VAC,16A,200GF,SPST-N	1	MONITOR
MB02	3405-001055	SWITCH-MICRO	125/250VAC,16A,200GF,SPST-N	1	PRI-S/W
MB02	3405-001034	SWITCH-MICRO	125/250VAC,16A,200GF,SPST-N	1	DOOR-S/W
MB04	DE66-00088A	LEVER-SWITCH	NC2000(0.6/0.8/1.2),PP,-,-,	1	
MB05	DE72-00138A	BODY-LATCH	NC2000(0.6/0.8/1.2),PP,-,-,-,	1	
MM01	DE70-00185C	PANEL-OUTER	MW1255WA(1.2CUFT),SECC,T0.6,	1	
MM03	DE39-00278A	WIRE HARNESS-A	MW1255WA,-,-,-,-,-,-,-,	1	
MM06	DE96-00100A	ASSY-MOTOR FAN	SMF-NC2UA1,120V60HZ,2800R	1	
MM07	DE39-20146E	ASSY POWER CORD	MSP-36,-,-,-,-,-,SPT-2 3	1	
MM08	OM75P(31)ESS	ASSY-MAGNETRON	OM75P(31)ESS	1	
MM09	DE71-00164A	COVER-AIR	MW1250WA(NC-12),PP(TB53),T1.7,	1	
MM10	4713-001102	LAMP-INCANDESCENT	125V,-,25W,TRP,-,-,25x	1	CV/AIR
MM102	DE63-00021A	CUSHION-HVT	MW6693G,EPDM,EPDM,T10.5,W30,	1	
MM13	DE66-90113A	LEVER-DOOR	PP(TB53-GH41),T2.5,-,-,12g,NT	1	
MM14	DE26-00061B	TRANS-H.V	SHV-U11KA_R,120V,60HZ,2300V/3.	1	
MM16	DE71-60449A	COVER-MGT	3RD-1.3 MW7896W,PP(TB53),-,25g	1	
MM17	DE47-20033A	THERMOSTAT	PW-2N,80/70,125V15A/250V7.5A,	1	
MM17	DE47-20194C	THERMOSTAT	-,PW2N,-,-,75C,65C,-,30.0,-,-	1	CAVITY
MM18	DE74-20015G	TRAY-COOKING	-,T6,-,-	1	
MM19	DE97-00222A	ASSY-GUIDE ROLLER	NC-1.2CUFT,SPS(C832) B	1	
MM20	DE67-00106A	COUPLER	PPS,-,8g,BRN,MW1250WA,NC-1.2	1	
MM22	DE31-10154A	MOTOR-SYNCHRONOUS	M2HJ49ZR02,ST-16,50/60	1	
MM27	DE61-40066A	FOOT	-,PP,-,BLK,-,-,-	2	
MM28	DE80-00024A	BASE-PLATE	MW1250WA,SGCC1,T0.6,-,-,NC200	1	
MM29	2501-001016	C-OIL	950nF,2.1KV,BK,35x54x80,20mm	1	
MM30	DE61-50106A	BRACKET-HVC	-,SECC,T0.8,W31,L125.8,-,-	1	
MM31	DE59-40001A	DIODE-H.V	HVR-1X-32B-12,-,-,-,-,-	1	
MM34	DE47-40025A	HOLDER-FUSE	KFSN-L-16,15A,NYLON#66,5G,-,	1	
MM52	DE63-90035G	CUSHION-RUBBER	-,DFA20,T2,W190,L100,-,-	1	

## 7-3 Control and Door Parts List

No.	Code No.	Description	Specification	Q'ty	Remark
MC01	-	ASSY CONTROL-BOX	-	1	S.N.A
MC02	DE34-00125E	SWITCH MEMBRANE	MW1260WA/XAO,S2 ,-,PET,-	1	
MC03	DE72-70209B	CONTROL-PANEL	M1933,ABS(HR0370U),T2.0	1	
MC04	DE61-70076A	SPRING-BUTTON	-,HSWR,PI0.6,PI0.6,-,-,-,-	1	
MC05	DE66-20281A	BUTTON-PUSH	3RD-W B DESIGN,-,T2x37x86,-,	1	
MC06	DE67-40175A	WINDOW-DISPLAY	5G,SAN,-,-,-,-,SMG,-	1	
MC07	RA-N2LED1-17	ASSY PCB PARTS	MW1660WA/XAX,120V60Hz	1	
MC13	DE94-00096G	ASSY CONTROL-PANEL	-,MS1070WA/XAA,WHT,AB	1	
MD01	-	ASSY DOOR	MS1270WA/XAA(NC-12),P/WHT,S2 D	1	S.N.A
MD02	DE64-00185A	DOOR-A	NC2000-1,ABS(HR0370),-,P/WHT,-,-,	1	
MD03	DE63-00042A	SCREEN-DOOR	CLEAR,MW1250WA(NC-12),PET,T0	1	
MD04	DE94-00428A	ASSY DOOR-E(COATING)	MW1250WA(NC-12),BLK	1	
MD05	DE64-00248A	FILM-DOOR	-,PE/PC,T0.15,178.5*306,-,-,-,	1	
MD06	DE64-00184A	DOOR-C	MW1250WA,PP,-,BLK,-,1.2CUFT,NC200	1	
MD07	DE61-00193A	SPRING-KEY	MW1255,HSWR,D5.5,-,-,L19,-,T0	1	
MD10	DE64-00210A	KEY-DOOR	NC2000(0.6/0.8/1.2),PP,-,BLK,-,	1	
MD11	DE94-00427A	ASSY DOOR-SUB	MW1250WA(NC-12),BLK,DOOR-E	1	

S.N.A : SERVICE NOT AVAILABLE

## 7-4 Standard Parts List

Code No.	Description	Specification	Q'ty	Remark
DE60-10012A	SCREW-TAP TITE	-,SWR10,M4,L10,TH,+, -,3,ZPC2,-	1	O/P
DE60-10059A	SCREW-TAP TH	-, -,SUS410,CR,TH,M4, -,L8, -, -	2	C/CEILING
DE60-10080B	SCREW-WASHER	-,2S,SWRCH18A,ZP2,PH,PI5, -,L10, -, -	4	MGT
DE60-10080B	SCREW-WASHER	-,2S,SWRCH18A,ZP2,PH,PI5, -,L10, -, -	4	TNS-HV
DE60-10082H	SCREW-A	-, -, -,2S-4X12,TOOTHED, -, -, -, -	3	B-PLTE
DE60-10082H	SCREW-A	-, -, -,2S-4X12,TOOTHED, -, -, -, -	2	BD-LAT
DE60-10082H	SCREW-A	-, -, -,2S-4X12,TOOTHED, -, -, -, -	2	CN-BOX
DE60-10082H	SCREW-A	-, -, -,2S-4X12,TOOTHED, -, -, -, -	1	CV/AIR
DE60-10082H	SCREW-A	-, -, -,2S-4X12,TOOTHED, -, -, -, -	2	MGT-TCO
DE60-10082H	SCREW-A	-, -, -,2S-4X12,TOOTHED, -, -, -, -	2	MO/FAN
DE60-10082H	SCREW-A	-, -, -,2S-4X12,TOOTHED, -, -, -, -	1	P-C-EA
DE60-10082H	SCREW-A	-, -, -,2S-4X12,TOOTHED, -, -, -, -	3	PN/OUT
DE60-10082H	SCREW-A	-, -, -,2S-4X12,TOOTHED, -, -, -, -	1	S-M-EA
DE60-10098A	SCREW-ASSY TAP TITE	-,GLD,SWRCH18A,ZPC2,PH,TC, -,M4X8,WT,-	2	M/DRIV
DE60-10195A	SCREW-STAR POLE	-,SWCH18A,4,12,TH,*, -,2,ZNC,-	2	O/PANEL
DE60-10088A	SCREW-TAP PH	-, -,FEFZY,PLAIN,PH,M3, -,L8, -, -	2	
DE60-10098A	SCREW-ASSY TAP TITE	-,GLD,SWRCH18A,ZPC2,PH,TC, -,M4X8,WT,-	1	HVD
DE60-10012A	SCREW-TAP TITE	-,SWR10,M4,L10,TH,+, -,3,ZPC2,-	1	